

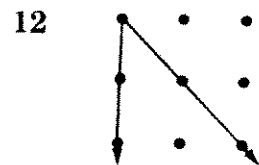
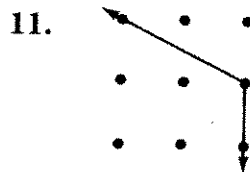
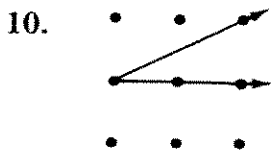
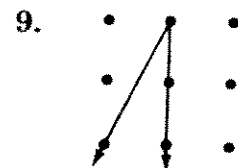
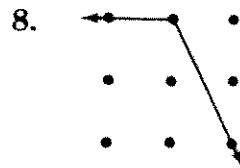
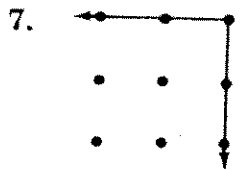
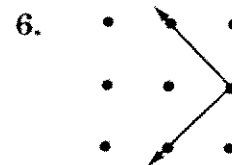
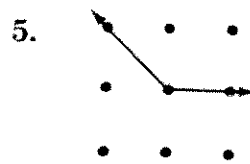
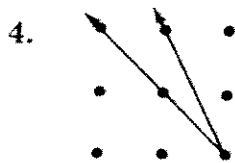
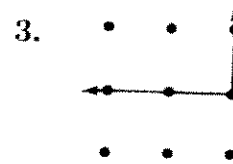
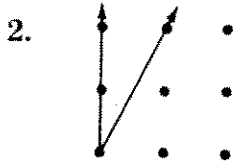
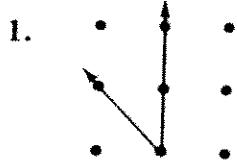
Name _____

Enrichment

9-2

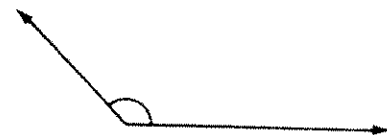
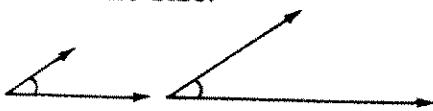
Student Book pp. 252-253

If it is a right angle, ring it. If it is less than a right angle, put a \surd next to it on the right. If it is greater than a right angle, put an X next to it on the right.



The size of an angle is determined by the distance between the two rays. The length of the rays shown in a drawing does *not* change the size.

These acute angles are the same size. These obtuse angles are the same size.



Write the exercise number or numbers to answer the question.

13. Which angle looks the same size as the angle in number 1? _____

14. Which angle looks the same size as the angle in number 8? _____

15. Which angles look the same size as the angle in number 2? _____

16. Which angles look the same size as the angle in number 3? _____